



## VILLA DEL SOL, MONACO

**ARCHITECT** ARCHI STUDIO - JEAN MICHEL UGHES  
**MARKET SEGMENT** MULTI-HOUSING, APPARTMENTS  
**BUILD TYPE** NEW  
**USE** FAÇADE  
**FIXING SYSTEM** INVISIBLE TS200  
**YEAR** 2018

**TRESPA® PRODUCTS** TRESPA® METEON®

NW14  
FRENCH  
WALNUT

A10.4.5  
SIENNA  
BROWN



# STRIKING AND COLOURFUL: AN APARTMENT BUILDING IN MONACO MAKES A STUNNING DESIGN STATEMENT WITH TRESPA® METEON® CLADDING

HIGH ABOVE THE CITY CENTRE, HALFWAY BETWEEN THE MOUNTAINS AND THE SEA, THERE IS A BUILDING THAT NOBODY CAN FAIL TO NOTICE: 'U PAVAYUN' PROUDLY SHOWCASES THE PRINCIPALITY'S OFFICIAL COLOURS – WHITE AND RED – IN A WAY UNIQUELY ITS OWN. BY COMBINING VIVID COLOURS INSPIRED BY NATURE WITH A BOLD AND MODERN ARCHITECTURAL CONCEPT, THE BUILDING MAXIMISES THE VISUAL IMPACT OF ITS VENTILATED FAÇADES. TO ADD THERMAL EFFICIENCY TO THE CLADDING'S ENDURING BEAUTY, EXTERNAL INSULATION HAS BEEN INTEGRATED INTO THE FAÇADE SYSTEM.

## THE STARTING POINT: AN AWKWARDLY SHAPED LOT

The building is located on a tightly curved street. To make the most out of the available space, the east façade is markedly convex, while on the opposite side, the building's façades are orthogonal.

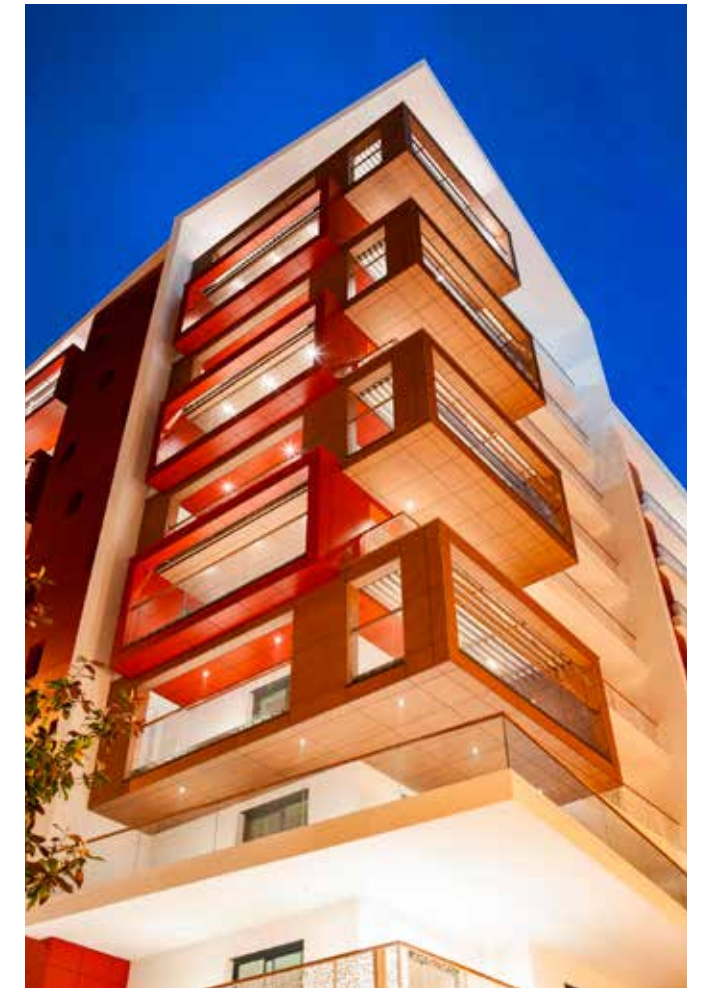
Jean-Michel Ughes of ArchiStudio in Monaco was put in charge of the project by the Principality itself. The architect was keen to stick to a design concept entirely based on the stringent interaction between lines and geometric volumes. On the west side, this idea translates into what looks, at first sight, like a deliberately deconstructed pile of boxes – in stark contrast with the smooth curvature of the east-facing balconies.

## CLEVERLY STACKED BOXES WITH SHARPLY DEFINED SEA VIEWS

The box-like volumes opening on the Mediterranean Sea and the Principality are a defining feature of the building. The views help remove the boundaries between indoor and outdoor by acting as extensions of the indoor living spaces. Flooded with sunlight, the apartments gain an additional dimension.

## CLADDING THE BOXES: WHY TRESPA® METEON® WAS THE SOLUTION OF CHOICE

Jean-Michel Ughes explains: "I was attracted to Trespa® panels right away, as we were working on a project which is completely at odds with traditional buildings. We wanted to design façades that would set us apart – that would be more contemporary, more innovative, and ultimately more enduring".



The stacked 'boxes' are in fact precisely aligned, and the resulting, consistent pattern is a defining feature of the building. ©ArchiStudio Monaco – Jean-Michel Ughes Architecte



I was attracted to Trespa® panels right away (...). We wanted to design façades that would set us apart – that would be more contemporary, more innovative, and ultimately more enduring”.

Jean-Michel Ughes, Archi Studio





The complexities we were faced with derived from the need to achieve perfect alignment. Any discrepancy between the position of the panel joints and the box outlines would have been very unsightly”.

*Jean-François Riehl, Monégasque de Couverture*



*A tight fit: the building was configured to make the most of the available space; accordingly, the façade facing the Ligurian Coast has been given a specific curved shape.  
© ArchiStudio Monaco – Jean-Michel Ughes Architecte*

In addition, the ventilated Trespa® Meteon® façades have been designed to include external thermal insulation: the insulation material is located between the exterior walls and the Trespa® panels. As uncommon as this technical option might be in Monaco, it comes with a crucial advantage: in a city where real estate is extravagantly expensive, every square foot counts, and external insulation – unlike its internal alternative – does not encroach on the available living space.

**PLAYFUL INTERACTIONS: HOW THE VIVID TRESPA® COLOURS COMPLEMENT THE WHITE PARTS OF THE FAÇADES**

For ‘U Pavayun’, the architect selected two best-sellers among the wide range of available Trespa® Meteon® finishes. Sienna Brown is a solid reddish brown tone reminiscent of brick, rammed earth and the painters’ famous ‘Terra di Siena’ colour. It is evocative of regional building traditions and materials. New Decor French Walnut, the second finish, is inspired by natural wood. The alternating use of each finish on the protruding box-like volumes containing the balconies creates a recurrent pattern that underscores the carefully constructed geometry of the façades.

In addition, both colours ideally complement the white elements of the building – the stuccoed surfaces and the balcony rail guards in perforated sheet metal.

**A TECHNICAL CHALLENGE DICTATED BY THE ARCHITECTURAL SIGNATURE**

The Trespa® Meteon® panels have been fastened to a two-part sub-frame: vertical sub-framing rails help achieve perfect alignment with the protruding boxes and horizontal rails support

the cladding itself. Jean-François Riehl of Monégasque de Couverture, the installer in charge of the project, comments: “The complexities we were faced with derived from the need to achieve perfect alignment. Any discrepancy between the position of the panel joints and the box outlines would have been very unsightly”.

The required shop drawings were made by ArchiStudio themselves. They thoroughly optimise the signature pattern of lines that sets the façades apart – to such an extent that the panel joints’ position picks up on the railings of the balconies and the edges of the adjacent window frames.

Invisible panel fasteners have been used almost throughout. Exposed screws with inconspicuous, colour-matching heads were only used for the ceilings of the boxes that enclose the balconies.

**THE FIRST BUILDING TO COMPLY WITH THE CERQUAL NF HABITAT HQE CERTIFICATION**

The Principality’s first building to be awarded this demanding certification – a benchmark for environmental compliance since 2015 – ‘U Pavayun’ combines 33 apartments on nine floors with three offices spaces on the ground floor. As a result of a comprehensive energy-saving approach, the building’s efficiency and performance exceed by a full 33% the criteria defined by the RT 2012 energy regulation. The installed equipments include LED-only lighting, photovoltaic solar panels (121m<sup>2</sup>), solar water heating panels (18m<sup>2</sup>) and reversible heat pumps (heating/AC) that include a fallback water heating function.

## CONTACT US

### TRESPA INTERNATIONAL B.V.

P.O. Box 110, 6000 AC Weert  
Wetering 20, 6002 SM Weert  
The Netherlands  
www.trespa.com

### CUSTOMER SERVICE DESK

#### EMEA EXPORT

Tel: +31 (0) 495 458 839  
Info.Export@Trespa.com

#### TRESPA UK LTD.

Coast Road  
North Shields  
Tyne & Wear, NE29 8RE  
United Kingdom  
Tel: 0808-2340268  
Info.UK@Trespa.com

### TRESPA NORTH AMERICA LTD.

350 Fifth Avenue, Ste 4610  
New York, NY 10118  
United States of America  
Tel: +1 800 487 3772  
Info.NorthAmerica@Trespa.com

### TRESPA CHINA CO. LTD.

Room 2604-05, HuaiHai Plaza  
No. 1045 HuaiHai Road (central)  
ShangHai 200031  
P.R. China  
Tel: +86 (0) 21 6288 1299  
Info.China@Trespa.com

### CUSTOMER SERVICE DESK ASIA/PACIFIC

Tel: +86 (0) 21 5465 8388  
Info.APAC@Trespa.com

## VISIT US

### TRESPA DESIGN CENTRE WEERT

Wetering 20  
6002 SM Weert  
The Netherlands  
Tel: +31 (0) 495 458 845  
TDC.Weert@Trespa.com  
www.trespa.com/tdc

### TRESPA DESIGN CENTRE BARCELONA

Calle Ribera 5,  
08003 Barcelona  
Spain  
Tel: +34 (0) 93 295 4193  
TDC.Barcelona@Trespa.com  
www.trespa.com/tdc

### TRESPA DESIGN CENTRE SANTIAGO

Eliodoro Yáñez 2831  
Torre A - Local 1  
Providencia, Santiago  
Chile  
Tel: +56 2 4069990  
TDC.Santiago@Trespa.com  
www.trespa.com/tdc

## FOLLOW US



## DISCLAIMER

### GENERAL

These terms apply to the use of this document and such use automatically means that the other party agrees to these terms. The information provided by Trespa International B.V. ("Trespa") in this document is solely indicative. Trespa is unable to warrant the accuracy and completeness of this information. Trespa may change the information included in this document at any time and without further notice. Trespa's customers and third parties must ascertain that they have the most recent document (for the most recent version, please consult: www.trespa.com). No rights can be derived from the information provided; the use of the information is at the other party's risk and responsibility. Trespa does not warrant that the information in this document is suitable for the purpose for which it is consulted by the other party. This document does not contain any design, structural calculation, estimate or other warranty or representation that customers and third parties may rely on. This document does not guarantee any properties of Trespa products. Colours used in Trespa's communications (including but not limited to printed matter) and in samples of Trespa's products may differ from the colours of the Trespa products to be supplied. Samples are not intended for use in product tests and are not representative of characteristics of the Trespa

products. Trespa's products and samples are produced within the specified colour tolerances and the colours (of production batches) may differ, even if the same colour is used. The viewing angle also influences the colour perception. Metallics panels feature a surface whose colour appears to change based on the direction from which it is viewed. The specified colour stability and colour specifications relate only to the decorative surface of the Trespa products, not to the core material and samples of the Trespa products. Trespa products are delivered ex-works with straight, sawn sides. Customers and third parties must have a professional adviser inform them about (the suitability of) the Trespa products for all desired applications and about applicable laws and regulations. Trespa does not warrant the above. The most recent version of the current delivery programme and the Material Properties Datasheet can be found at www.trespa.info. Only the information in the most recent and valid Material Property Datasheet should be used to select and provide advice regarding Trespa products. Trespa reserves the right to change (the specifications for) its products without prior notice.

### LIABILITY

Trespa is not liable (neither contractual nor non-contractual) for any damage arising from or

related to the use of this document, except if and to the extent that such damage is the result of wilful misconduct or gross negligence on the part of Trespa and/or its management. The limitation of liability applies to all parties affiliated with Trespa, including but not limited to its officers, directors, employees, affiliated enterprises, suppliers, distributors, agents, and representatives.

### GENERAL CONDITIONS

All oral and written statements, offers, quotations, sales, supplies, deliveries and/or agreements and all related activities of Trespa are governed by the Trespa General Terms and Conditions of Sale (*Algemene verkoopvoorwaarden Trespa International B.V.*) filed with the Chamber of Commerce and Industry for Noord- en Midden-Limburg in Venlo (NL) on February 20th, 2015 under number 24270677, which can be found on and downloaded from the Trespa website, www.trespa.com/documentation. All oral and written statements, offers, quotations, sales, supplies, deliveries and/or agreements and all related work of Trespa North America, Ltd. are governed by the Trespa North America General Terms and Conditions of Sale, which can be found on and downloaded from the Trespa website, www.trespa.com/documentation. A copy of these general conditions of sale will be provided free of

charge on request. All general terms and conditions other than the conditions mentioned above are dismissed and do not apply, regardless of whether such terms and conditions are referred to on requests for offers, offer confirmations, stationery and/or other documents of the other party, even if Trespa does not expressly object to such terms and conditions.

### INTELLECTUAL PROPERTY

All intellectual property rights and other rights regarding the content of this document (including logos, text and photographs) are owned by Trespa and/or its licensors. Any use of the content of this document, including distribution, reproduction, disclosure, storage in an automated data file or the dispatch of such a file without Trespa's prior written consent is explicitly prohibited. \* Trespa, Meteon, Athlon, TopLab, TopLab<sup>PLUS</sup>, TopLab<sup>ECO-FIBRE</sup>, TopLab<sup>VERTICAL</sup>, TopLab<sup>BASE</sup>, Virtuon, Izeon, Pura, Pura NFC, Volkern, Trespa Essentials and Mystic Metallics are registered trademarks of Trespa.

### QUESTIONS

Should you have any questions or comments, please do not hesitate to contact Trespa.

VERSION 1.0 ■ BROCHURE CODE U7036 ■ DATE 06-2020



VISIT [TRESPA.COM](http://TRESPA.COM) FOR THE MOST  
UP TO DATE VERSION OF THIS DOCUMENT.

TRESPA®