

# INTERIOR PANELS

# Think Trespa



# TRESPA®

Version 3.3

Trespa North America Ltd. website, [www.trespa.com/na](http://www.trespa.com/na). A copy of these general conditions of sale will be provided free of charge on request.

All general terms and conditions other than the conditions mentioned above are dismissed and do not apply, regardless of whether such terms and conditions are referred to on requests for offers, offer confirmations, stationary and/or other documents of the other party, even if Trespa does not expressly object to such terms and conditions.

#### Intellectual property

All intellectual property rights and other rights regarding the content of this document (including logos, text and photographs) are owned by Trespa and/or its licensors. Any use of the content of this document, including distribution, reproduction, disclosure, storage in an automated data file or the dispatch of such a file without Trespa's prior written consent is explicitly prohibited. © Trespa, Metcon, Athlon, TopLab, TopLab<sup>PLUS</sup>, TopLab<sup>ECCO-FIBRE</sup>, Virtuo, Volkern, Trespa Essentials and Mystic Metallics are registered trademarks of Trespa.

#### Questions

Should you have any questions or comments, please do not hesitate to contact Trespa.

[www.Trespa.com](http://www.Trespa.com)

**Trespa/Arpa Design Centre Barcelona**  
Calle Ribera 5,  
08003 Barcelona  
Spain  
Tel.: +34 (0) 93 295 4193  
Fax: +34 (0) 93 116 3300  
TDC.Barcelona@Trespa.com  
[www.Trespa.com/TDC](http://www.Trespa.com/TDC)

**Trespa Design Centre Santiago**  
Eliodoro Yáñez 2831  
Torre A - Local 1  
Providencia - Santiago  
Chile  
Tel.: +56-2-4069990  
TDC.Santiago@Trespa.com  
[www.Trespa.com/TDC](http://www.Trespa.com/TDC)

Projects on cover:  
Convention and Exhibition Center, France  
Swimmingpool, France  
School Withins, Great Britain

**Liability**  
Trespa is not liable (neither contractual nor non-contractual) for any damage arising from or related to the use of this document, except if and to the extent that such damage is the result of wilful misconduct or gross negligence on the part of Trespa and/or its management. The limitation of liability applies to all parties affiliated with Trespa, including but not limited to its officers, directors, employees, affiliated enterprises, suppliers, distributors, agents, and representatives.

#### General conditions

All oral and written statements, offers, quotations, sales, supplies, deliveries and/or agreements and all related activities of Trespa are governed by the Trespa General Terms and Conditions of Sale (*Algemene verkoopvoorwaarden Trespa International B.V.*) filed with the Chamber of Commerce and Industry for Noord- en Midden-Limburg in Venlo (NL) on 11 April 2007 under number 24270677, which can be found on and downloaded from the Trespa website, [www.trespa.com](http://www.trespa.com). All oral and written statements, offers, quotations, sales, supplies, deliveries and/or agreements and all related work of Trespa North America, Ltd. are governed by the Trespa General Terms and Conditions of Sale, which can be found on and downloaded from the

#### VISIT US

**Trespa Design Centre New York**  
62 Greene Street (Ground Floor)  
New York, NY 10012  
United States of America  
Tel.: 1-212-334-6888  
Fax: 1-866-298-3499  
TDC.NewYork@Trespa.com  
[www.Trespa.com/TDC](http://www.Trespa.com/TDC)

**Trespa Design Centre Weert**  
Wetering 20  
6002 SM Weert  
The Netherlands  
Tel.: +31 (0) 495 458 845  
TDC.Weert@Trespa.com  
[www.Trespa.com/TDC](http://www.Trespa.com/TDC)

and are not representative of characteristics of the Trespa products. Trespa's products and samples are produced within the specified colour tolerances and the colours (of production batches) may differ, even if the same colour is used. The viewing angle also influences the colour perception. Metallic panels feature a surface whose colour appears to change based on the direction from which it is viewed. The specified colour stability and colour specifications relate only to the decorative surface of the Trespa products, not to the core material and samples of the Trespa products. Trespa products are delivered ex-works with straight, sawn sides.

Customers and third parties must have a professional adviser inform them about (the suitability of) the Trespa products for all desired applications and about applicable laws and regulations. Trespa does not warrant the above.

The most recent version of the current delivery programme and the Material Properties Datasheet can be found at [www.trespa.info](http://www.trespa.info). Only the information in the most recent and valid Material Properties Datasheet should be used to select and provide advice regarding Trespa products. Trespa reserves the right to change (the specifications for) its products without prior notice.

#### DISCLAIMER

**General**  
These terms apply to the use of this document and such use automatically means that the other party agrees to these terms. The information provided by Trespa International B.V. ("Trespa") in this document is solely indicative. Trespa is unable to warrant the accuracy and completeness of this information. Trespa may change the information included in this document at any time and without further notice. Trespa's customers and third parties must ascertain that they have the most recent document (for the most recent version, please consult: [www.trespa.com](http://www.trespa.com)). No rights can be derived from the information provided; the use of the information is at the other party's risk and responsibility.

Trespa does not warrant that the information in this document is suitable for the purpose for which it is consulted by the other party. This document does not contain any design, structural calculation, estimate or other warranty or representation that customers and third parties may rely on. This document does not guarantee any properties of Trespa products. Colours used in Trespa's communications (including but not limited to printed matter) and in samples of Trespa's products may differ from the colours of the Trespa products to be supplied. Samples are not intended for use in product tests

#### CONTACT US

**Trespa International B.V.**  
P.O. Box 110, 6000 AC Weert  
Wetering 20, 6002 SM Weert  
The Netherlands  
[www.Trespa.com](http://www.Trespa.com)

**Customer Service Desk EMEA Export**  
Tel.: +31 (0) 495 458 359 / 573  
Fax: +31 (0) 495 458 383  
Info.Export@Trespa.com

**Arpa UK Ltd**  
Block 3, Parkhall Business Village,  
Park Hall Road, Longton  
Stoke-on-Trent ST3 5XA  
Great Britain  
Tel.: +44 (0) 1782 332 368  
Fax: +44 (0) 1782 331 876  
[arpauk@arpaindustriale.com](mailto:arpauk@arpaindustriale.com)

For information regarding scientific furniture in the United Kingdom please contact:  
Info.UK@Trespa.com  
Tel.: +44 (0) 1952 290 707

**Trespa North America Ltd.**  
12267 Crosthwaite Circle  
Poway, CA 92064  
United States of America  
Tel.: 1-800-487-3772  
Fax: 1-858-679-9568  
Info.NorthAmerica@Trespa.com

**Trespa China Co. Ltd.**  
Room 2604-05, HuaiHai Plaza  
No. 1045 HuaiHai Road (central)  
ShangHai 200031  
P.R. China  
Tel.: +86 (0) 21 6288 1299  
Fax: +86 (0) 21 6288 1296  
Info.China@Trespa.com

**Customer Service Desk Asia/Pacific**  
Tel.: +86 (0) 21 5465 8388  
Fax: +86 (0) 21 5465 6989  
Info.APAC@Trespa.com

For information regarding scientific furniture in other countries please contact:  
ScientificFurniture@Trespa.com  
Tel.: +31 (0) 495 458 412

Your Trespa representative :

code: U4800 version 3.3  
date 01-01-2014 copies 1,000  
TOM-code 411210 / U4800

Please visit [www.Trespa.com](http://www.Trespa.com) for the most up to date version of this document.

## TRESPA® ATHLON®

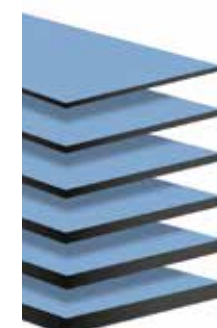
#### Panel size:

3730 x 1860 mm  
(≈ 147 x 73 in)

2550 x 1860 mm  
(≈ 100 x 73 in)

3050 x 1530 mm  
(≈ 120 x 60 in)

#### Panel thickness:



6 mm (≈ 1/4 in)

8 mm (≈ 5/16 in)

10 mm (≈ 3/8 in)

13 mm (≈ 1/2 in)

16 mm (≈ 5/8 in)

19/20 mm (≈ 3/4 in)

#### Panel type:

☐ = Double sided decorative



Please check [www.trespa.info](http://www.trespa.info) for the detailed and up to date Delivery Programme and Material Property Datasheet.

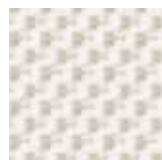
# TRESPA®



#### About Trespa

Trespa International B.V. is a leading innovator in the field of architectural materials, recognised internationally as the premier developer of HPL panels and related building systems. Founded in 1960 and with headquarters in the Netherlands, Trespa manufactures high-performance Trespa® panels for the worldwide market.

Trespa's focus is on product development, combining quality manufacturing technologies with intelligent solutions for architectural applications. Our global sales organization is complemented by a network of local agents and distributors, bringing regional insights to each customer's needs.



# TRESPA® ATHLON® – A SOLID AND DURABLE INTERIOR SOLUTION

Engineered for lasting good looks in the most demanding interior applications, Trespa® Athlon® is a decorative high-pressure compact laminate (HPL) with a melamine surface. Trespa® Athlon®'s underlying technology transforms wood-based fibres with thermosetting resins, under high pressure and at high temperatures, into robust panels that meet the most exacting specifications.

## Exceptional Appearance

Trespa® Athlon® is extremely versatile. The panels can be combined easily with other building materials to create one-of-a-kind effects and highlights. Trespa® Athlon® comes in a broad range of classic, modern and trend-setting colours, ensuring you'll find what you need. Trespa® Athlon® panels are available in a variety of panel sizes and thicknesses. Please check [www.trespa.info](http://www.trespa.info) for the standard delivery programme in your region.

## Assured Performance

Designers need materials that do more than appeal to the eye: every product must meet rigorous codes and standards<sup>1</sup> whilst delivering proven installed performance

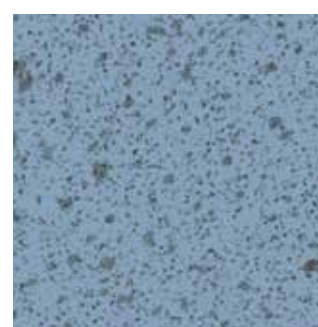
and good return on investment. Where concept meets solution, Trespa® Athlon® delivers.

## Impact resistant

Trespa® Athlon® features a hard melamine surface, giving the panels exceptional impact resistance. That explains why Trespa® Athlon® is used for wall cladding, sanitary cubicles and an array of work surfaces in office and laboratory settings. A variety of healthcare applications are also ideal for Trespa® Athlon®.

## Scratch and wear resistant

With its special surface construction, Trespa® Athlon® delivers excellent scratch resistance and overall durability. Even under heavy-duty conditions, the panels retain their appearance for a long time. Trespa® Athlon® is highly resistant to wear, making it ideal for installation where severe use and frequent cleaning are expected.



## Moisture and mould resistant

When installed properly, Trespa® Athlon® resists moisture and remains impervious to mould or rot. The panels are manufactured using specially formulated thermosetting resins designed for resistance against wetness and related degradation.

## Low maintenance

Trespa® Athlon® panels are robust and non-reactive, so no coatings or protective covers are required for exposed surfaces or machined edges. The closed surfaces of dense HPL practically eliminate dirt accumulation, keeping Trespa® Athlon® smooth and easy to clean. Non-abrasive household cleaning agents – even strong organic solvents – can be used in accordance with Trespa's approved cleaning methods. (For instructions, visit [www.trespa.info](http://www.trespa.info))

## Solid and sturdy

Trespa® Athlon® is an engineered, rigorously fabricated panel product that turns wood-based fibres and resins into a highly resistant, dimensionally stable building material. The resulting HPL panels have a homogenous core and are easily machinable and workable, similar to hardwoods.

## Fire behaviour

Trespa is committed to the safety of its processes and products. Two classes of Trespa® Athlon® are available<sup>2</sup>: Standard grade and enhanced Fire-Retardant grade (FR). Please check [www.trespa.info](http://www.trespa.info) for the standard delivery programme in your region.



## Environmental Considerations

The first word in sustainable design is durability. Make it work, and make it last. When it comes to long product life, Trespa® Athlon® delivers. Trespa stands behind your choice, with environmental credentials and a mission to support the green building movement. Our ISO 14001 accreditation for Environmental Management Systems sets us apart: it means Trespa has created, implemented and continually improves a fully developed system assuring environmental standards are met. Every day.

# COLOUR COLLECTION

## Uni colours

E 0-015 Pastel Grey	
E 0-02 Silver Grey	
E 25-03 Zinc Grey	
E 0-04 Mid Grey	
E 0-09 Black	
E 16-16 Marine Blue	
E 18-45 Prussian Blue	
E 15-54 Ultra Marine	
E 17-52 Aqua Blue	
E 17-33 Brilliant Blue	
E 17-32 Powder Blue	
E 17-30 Heaven Blue	
E 19-11 Light Blue	
E 25-01 Icay Blue	
E 2-01 Pearl White	

E 0-00 White	
E 2-10 Paper White	
E 3-01 Sand	
E 2-11 Stone Beige	
E 5-11 Soft Pink	
E 7-62 Poppy Red	
E 3-42 Gold Yellow	
E 2-31 Melon Yellow	
E 23-21 Pastel Green	
E 20-12 Aquamarine	
E 22-53 Emerald Green	

## Fantasy

S 0-00 Speckle White	
S 0-015 Speckle Pastel Grey	
S 0-02 Speckle Silver Grey	
S 0-04 Speckle Mid Grey	
S 3-01 Speckle Sand	
S 2-31 Speckle Melon Yellow	
S 19-11 Speckle Light Blue	
S 17-30 Speckle Heaven Blue	
S 17-32 Speckle Powder Blue	
S 20-12 Speckle Aquamarine	
C 0-09 Black Craquele	
CL-1 Calico	

## Wood Decors

W 71-03 Silver Maple	
W 80-01 Lime	
W 88-02 European Wild Apple	
W 74-01 Oak	
W 78-01 Wild Cherry	
W 85-02 Pear	
W 73-01 Beech	
W 82-03 Verona Walnut	
W 76-01 Highland Pine	

<sup>1</sup> Trespa strongly advises that the project owner and/or architect seek(s) independent advice from a certified construction professional and/or engineer regarding application and installation. Although this brochure is composed with reasonable care, please note that this brochure provides general information only and is subject to our disclaimer on the reverse side of this document.

<sup>2</sup> Availability limited – contact your local Trespa representative for more details.