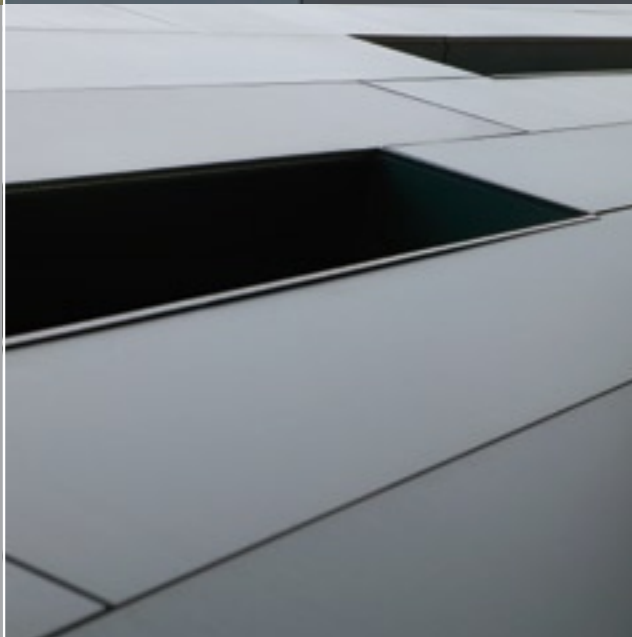
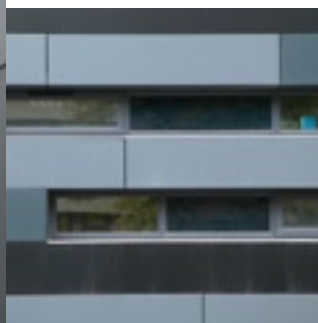


# EXTERIOR PROJECTS



## University of Leeds Performing Arts Centre

- Location** : Leeds, UK
- Function** : University
- Architect** : DLA Architecture, West Yorkshire
- Colour** : A 90.0.0 Black, A 25.8.1 Anthracite Grey, A 25.7.1 Iron Grey
- Structure** : Saffin
- Fixing System** : TS400 Glue on an aluminium frame



TRES|PA®

