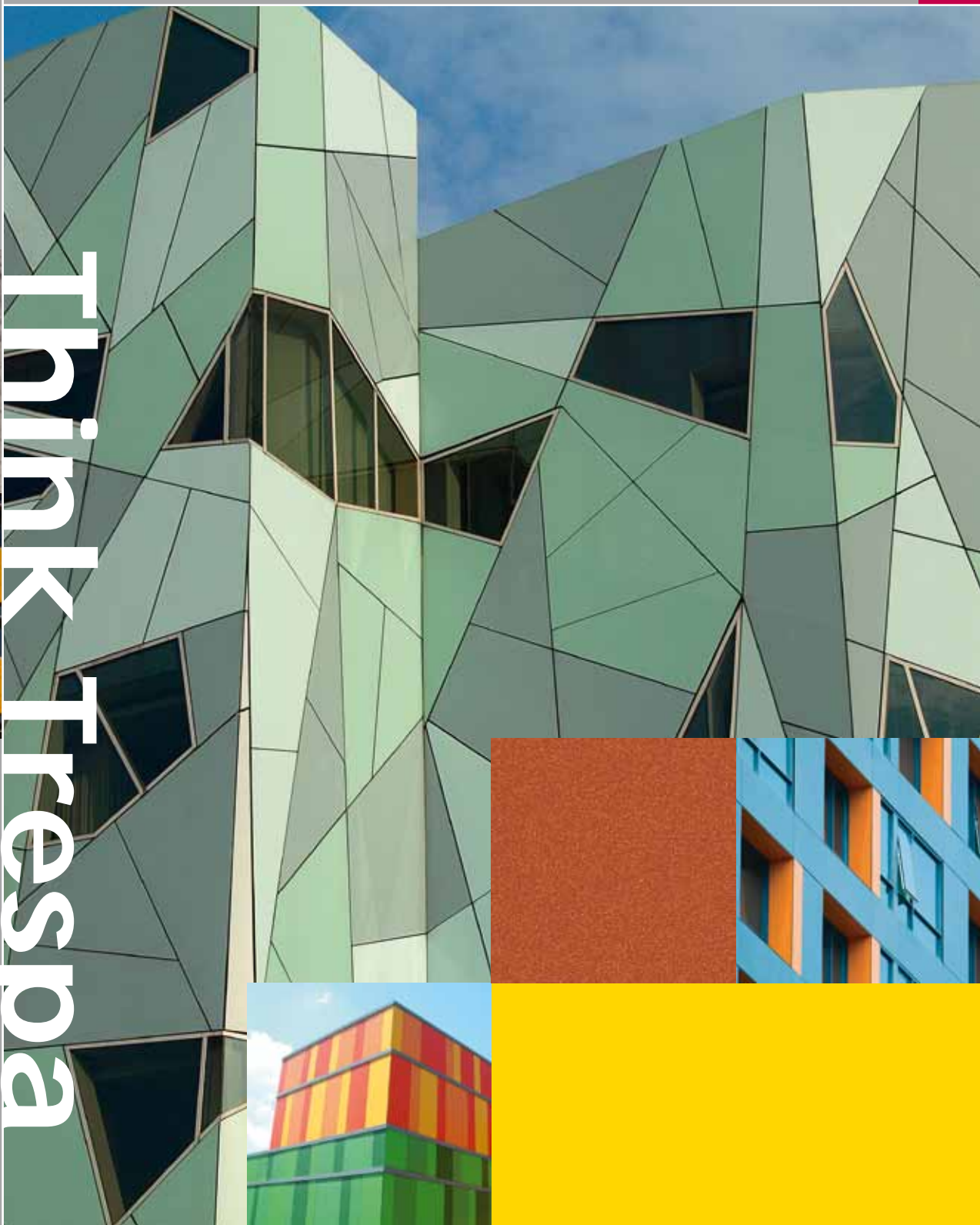


# EXTERIOR PANELS

Think Trespa



TRESPA®



## ABOUT TRESPA

Trespa International B.V. is a leading innovator in the field of architectural materials, recognised internationally as the premier developer of HPL panels and related building systems. Founded in 1960 and with headquarters in the Netherlands, Trespa manufactures high-performance Trespa Meteón panels for the worldwide market. Trespa's focus is on product development, combining quality manufacturing technologies with intelligent solutions for architectural applications. Our global sales organization is complemented by a network of local agents and distributors, bringing regional insights to each customer's needs.

---

*See "The global leader in façade solutions" on page 14 for more information.*

## VENTILATED FAÇADES

Trespa Meteón panels are installed as a component of rainscreen cladding or ventilated façade system. This "breathing" envelope system, employed the world over, can contribute a number of advantages to building designs.

---

*See "About Ventilated Façades" on page 13 for more information.*

# TRESPA METEON – FAÇADE PANELS THAT INSPIRE, PERFORM AND ENDURE

COLOUR

TEXTURE

NATURAL

## Created to Inspire

Elements of beauty in the world around us – that’s the spirit behind Trespa Meteon, Trespa’s leading family of architectural panels for façades and exterior applications. With a broad range of colours, finishes and tactile effects, Trespa Meteon brings compelling aesthetic and nearly limitless design possibilities to next-generation architectural claddings.

ROBUST

STABLE

LONG-LASTING

## Engineered to Perform

Trespa Meteon is a decorative high-pressure compact laminate (HPL) with an integral surface manufactured using Trespa’s unique in-house technology, Electron Beam Curing (EBC). Engineered for façades and other demanding exterior applications, Trespa Meteon’s underlying technology transforms wood-based fibres with thermosetting resins under high pressure and at high temperatures into striking panels that meet the most exacting specifications.

VIBRANT

VERSATILE

EFFECTIVE

## Built to Endure

Developed in the Netherlands and specified by architects worldwide, Trespa Meteon is synonymous with durability and leading-edge design. The panels are robust and adaptable for ventilated façades and other high-performance building applications. Depending on the architectural concept, Trespa Meteon can contribute effectively to energy efficient, healthy building designs with a positive impact on long-term performance and value.



# FAÇADE PANELS THAT INSPIRE

## Your vision, in Trespa Meteon

Good design starts with inspiration, exceptional vision and provocative thinking. It comes to life with great materials, finishes and systems. Where concept meets solution, you'll find Trespa Meteon.

## Visual appeal

Start with Trespa Meteon's ability to customise panel aesthetics with unique finishes and varied shapes. Enhance it with contrasting materials, articulated fixing and lighting – and more. Start with Trespa Meteon, and end with a remarkable façade. The result: A building that projects innovation, excitement and a decidedly contemporary image.

## A world of proof

Great architecture elevates a mere building to a work of art. Trespa Meteon can be found on thousands of celebrated structures worldwide by eminent designers. These works bear testimony to the versatility and visual power of Trespa Meteon.

Trespa Meteon's beauty is more than skin deep – it offers a lasting aesthetic, in materials tested according to stringent codes and standards. So today's vision will remain tomorrow's reality.

When it comes to inspiration and transforming your ideas into lasting, memorable façades, Trespa is the partner of choice.



# DESIGN FREEDOM FIRST

Trespa Meteon is an extremely versatile material.

The panels can be combined easily with other building materials to create one-of-a-kind effects and highlights. And Trespa Meteon's broad range of classic, modern and trend-setting designs ensures you'll find what you need – even if it's a wholly custom design.

## Appearance

Trespa Meteon is available in many standard colours, textures and finishes, including lustrous Metallics. The acclaimed Naturals and Wood Decors collections offer a wide range of wood grains and organic motifs. For variety, panels can be oriented in different directions for distinctive visual effects across a façade. Making custom colours and finishes a reality for practically any project, Trespa offers a low minimum order quantity. Start with Trespa Meteon, for the ultimate in design freedom.

## Size

Panels can be produced in a variety of sizes including an exceptionally large 4270 x 2130 mm (±168 x 83 in). Beyond the exciting options it offers for façade grids, this format can also reduce cutting losses and can minimise waste during fabrication.

## Shape

Trespa Meteon may be cut and installed in many configurations or profiles. Plus, combining Trespa Meteon with Trespa Curved Elements<sup>1</sup> radiused panels lends façades added depth and character.

## Installation

With a dense and homogeneous core, Trespa Meteon panels can be machined similar to high-quality hardwood using standard carpentry tools, leaving crisp, clean edges and uniform openings. Trespa Meteon can be applied in a number of ways, using a number of joinery details and both exposed and concealed fixing<sup>2</sup>.

(For information on possible fixing systems in your region, visit [www.trespa.info](http://www.trespa.info).)

## Effect

To achieve even more visual impact, Trespa Meteon can be combined with new technologies such as LED lighting elements<sup>1</sup>, and the result is dazzling.

Create rhythm, character and depth. Add colour and texture, and play with light and shadow. Use Trespa Meteon alongside other building materials for contrast, harmony and accent. The result is a façade that transforms and enhances, adding new dimensions to any building design.

---

<sup>1</sup> Availability limited – contact your local Trespa representative for more details.

<sup>2</sup> Trespa strongly advises that the project owner and/or architect seek(s) independent advice from a construction professional regarding application and installation. Although this brochure is composed with reasonable care, please note that this brochure provides general information only and is subject to our disclaimer on the reverse side of this document.



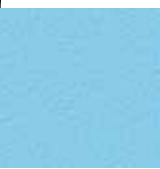
Arch. Michele Siragola, Italy



Arch. Erica Mosciaro, Fusina 6, Spain



Atelier Jean Nouvel, France





# FAÇADE PANELS THAT PERFORM

## Assured performance, Trespa Meteon

Today's buildings challenge architects and project teams at every turn. Designers need materials and systems that do more than appeal to the eye: they must meet rigorous codes and standards<sup>2</sup> whilst delivering proven installed performance – and good return on investment. Where concept meets solution, Trespa Meteon delivers.

## A wealth of applications

Trespa Meteon stands out in vertical exterior wall coverings such as façade cladding, balcony panelling as well as horizontal exterior ceiling applications.

The dimensionally stable, precisely edged panels lend crisp profiles and sleek, uniform surfaces to any exterior use. Vary joint reveals for limitless options in exterior expression.

Trespa Meteon panels are installed as a component of rain screen cladding or ventilated façade system.

This “breathing” envelope system, employed the world over, can contribute a number of advantages to building designs. (See “About Ventilated Façades,” page 13.)

When designed effectively, key benefits include:

- > Moisture and thermal control.
- > Improved acoustics.
- > Enhanced indoor environmental quality (IEQ).
- > Overall gains in building performance and durability.

Engineered for strength, precision and performance.

Ideal for today's most effective cladding designs. Start with Trespa Meteon, and end with a high-performance façade.

## It begins with the right panel

Trespa Meteon is a high-pressure decorative compact laminate (HPL) with an integral decorative surface technology.

The blend of up to 70% wood-based fibres and thermosetting resins, manufactured under high pressures and temperatures, yields a highly stable, dense panel with good strength-to-weight ratios.

The resulting self-supporting, integrally decorative panels are highly resource-efficient and lasting. And by providing a cladding panel ideal for ventilated façades, Trespa Meteon offers significant architectural opportunities: energy efficiency, healthy interiors and a compelling, lasting aesthetic.



# PERFORMANCE-DRIVEN SPECS

Trespa Meteor is an engineered and rigorously fabricated panel product that turns wood-based fibres and resin into a highly resistant, dimensionally stable building material. The resulting high-pressure laminate (HPL) has a homogenous core and is available in several thicknesses between 6<sup>1</sup> mm (± ¼ in) and 13 mm (± ½ in). Please check [www.trespa.info](http://www.trespa.info) for the available thicknesses in your region.

## Solid and sturdy

Consistent and high-density throughout, Trespa Meteor holds bolts, screws and other mechanical fixings solidly. The panels have good compressive and tensile strength and excellent pullout and impact resistance, yet Trespa Meteor is easily machinable and workable.

## Safe and secure

Trespa is committed to the safety of its processes and products. Two classes of Trespa Meteor are available: Standard<sup>1</sup> grade and enhanced Fire-Retardant grade (FR). Trespa Meteor's standard delivery programme complies with European Standard EN 438-6 and has been accepted for the European Economic Area (EEA) mandatory CE mark according to the EN 438-7. Trespa Meteor meets stringent regulations for consumer safety, health and environmental issues in many markets around the world, certified by such institutes as KOMO, DIBt, BÜtgb, BBA, CSTB, Torroja and UL.

## Weather resistant and colour stable

Trespa Meteor panels perform outdoors exceptionally well. Sun and rain will have no significant effect on the panel's surface. Trespa Meteor is practically impervious to acid rain as well. Accelerated weathering tests are the best measure of performance, and recent trials continue to rank Trespa Meteor's decorative surface at high classifications for UV-resistance and colour stability.

Standing behind Trespa Meteor's outstanding results in weathering is Trespa's in-house expert center, a group highly specialised in weatherability performance, amongst other areas. Actual performance of Trespa Meteor panels depends on local climate and building circumstances, of course – but its baseline is superlative.



To guarantee the availability of the latest updated product information, the Material Property Datasheet is available at [www.trespa.info](http://www.trespa.info).

## Low maintenance

Trespa Meteor panels are robust and nonreactive, so no coatings or protective cover is required for exposed surfaces or machined edges. Its closed, pore-free surfaces of dense HPL practically eliminate dirt accumulation, keeping Trespa Meteor smooth and easy to clean. Nonabrasive household cleaning agents – even strong organic solvents – can be used in accordance with Trespa's approved cleaning methods. (For instructions, visit [www.trespa.com](http://www.trespa.com).)

The unique properties of Trespa Meteor panels make them highly durable with a long life of retained appearance. That's why the Trespa Meteor range is backed by a 10-year product warranty. (For details on product warranty conditions, contact your local Trespa representative or visit [www.trespa.com](http://www.trespa.com).)

---

<sup>1</sup> Availability limited - contact your local Trespa representative for more details.

<sup>2</sup> Trespa strongly advises that the project owner and/or architect seek(s) independent advice from a construction professional regarding application and installation. Although this brochure is composed with reasonable care, please note that this brochure provides general information only and is subject to our disclaimer on the reverse side of this document.

# FAÇADE PANELS THAT ENDURE

## Enlightened choice, Trespa Meteon

The first word in sustainable design is durability. Make it work, and make it last.

When it comes to long product life, Trespa Meteon delivers. And Trespa stands behind your choice with environmental credentials and a mission to support the green building movement. Our ISO 14001 accreditation for Environmental Management Systems sets us apart: it means Trespa has created, implemented and continually improves a fully developed system assuring environmental standards are met. Every day.

Trespa developed Trespa Meteon to meet our vision – and the project team's vision – of an ecologically advanced future.

## Material

Start with the material itself: Impact-resistant Trespa Meteon panels boast a dimensional stability comparable to hardwood. Properly installed, Trespa Meteon resists moisture, freeze-thaw cycles, mould and rot as well as termites and microbial attack. A homogenous, high-density core makes Trespa Meteon extremely robust – most colours meet the highest classifications for European Standard EN 438-6, ASTM D-2244 and other major codes. Under typical conditions, the material lasts for many years with negligible performance loss.





### **Building system**

Then consider the building system: As a champion of ventilated façade construction, Trespa is on the forefront of cutting-edge building techniques. Ventilated façades are more than a design gesture – they're a proven way to create energy efficient, long-lasting properties. In industry studies, ventilated façade systems are shown to reduce energy needs and improve interior environments to benefit occupant health.

Many of these advantages also contribute to green building certifications. For more information on ventilated façades, please visit [www.trespa.com](http://www.trespa.com).

### **Life of the building**

Last, consider the life of the building: Because Trespa Meteon is so durable, fewer products need to be applied during the building's years of use. Trespa Meteon's exceptionally large panel size even further reduces cutting losses and embodied energy from fabrication. Waste from Trespa panels can be incinerated in properly controlled industrial installations – a technique used at the Trespa production site. Replacing and repairing rain screen Trespa Meteon panels is relatively easy, too. At end of life, Trespa Meteon installed with mechanical fixings can be demounted and reused.

### **Overcladding**

Trespa Meteon is ideal for overcladding and renovating older buildings, often adding an extra insulation layer in the process and without need for structural or foundation reinforcement<sup>2</sup>. This can reduce construction budgets whilst recycling existing structures and materials and conserving demolition energy.

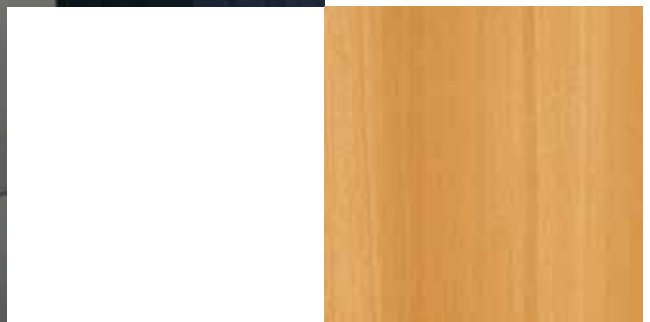
A more promising future starts with a ventilated façade using Trespa Meteon – rugged and attractive, safe and low-maintenance, energy efficient and eco-effective.

---

<sup>2</sup> *Trespa strongly advises that the project owner and/or architect seek(s) independent advice from a construction professional regarding application and installation. Although this brochure is composed with reasonable care, please note that this brochure provides general information only and is subject to our disclaimer on the reverse side of this document.*



Kossar and Gary Architects, United States of America

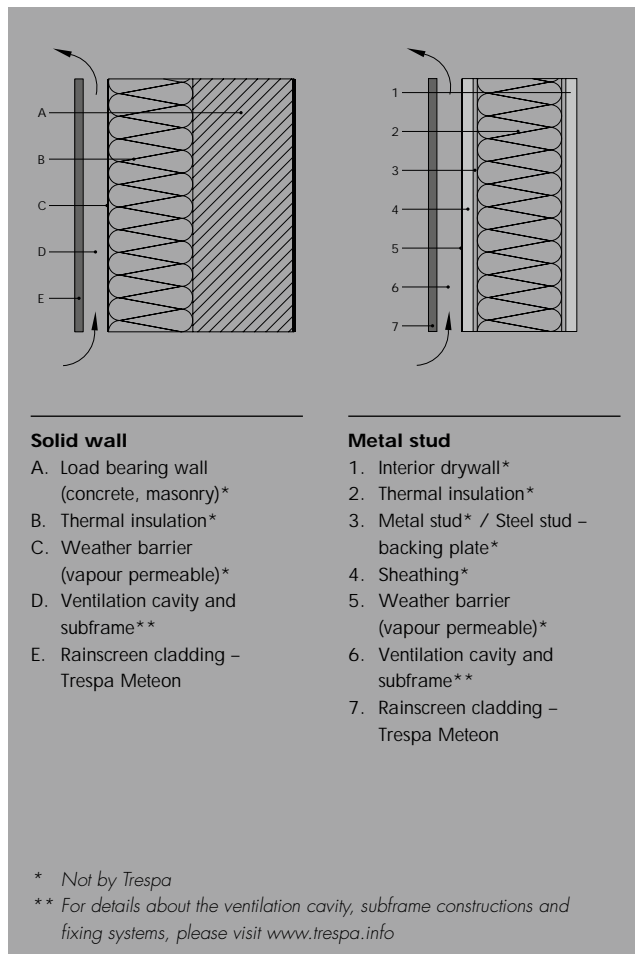


# ABOUT VENTILATED FAÇADES

For façade applications, Trespa Meteor is used only as rainscreen, also known as ventilated façade, a building solution with both technical and aesthetic benefits. Ventilated façade systems entail the fixing of panels on a subframe, which is fixed to the structural façade. Joints between panels can remain open. The cavity between the rainscreen cladding and the insulation or construction allows for ventilation to flow through from the ventilation inlets and outlets.

These assemblies result in a variety of advantages. First, a chimney effect draws air through the cavity, aiding in the removal of heat and moisture from rain or condensation. Second, the rainscreen blocks some solar gain and accommodates continuous insulation, considerably reducing air-conditioning. Third, these results are shown to improve comfort within occupied zones.

Considered fast to assemble and requiring no wet trades, ventilated façade systems have gained prominence amongst architects, building owners and code officials. An increasing number of projects around the world have used this technique for new constructions, refurbishments, renovations and conservation purposes. For new buildings, rainscreen offers excellent design flexibility, technical advantage, and aesthetic range.



# THE GLOBAL LEADER IN FAÇADE SOLUTIONS

**Trespa International B.V. is a leading global producer of innovative and inspirational façade solutions, turning architectural ideas into lasting reality. With headquarters in the Netherlands, Trespa manufactures high-performance Trespa Meteon panels for construction markets around the world.**

Since its founding in 1960, Trespa has worked closely with architects, designers, installers, distributors and end users globally. With unique insights into key market challenges and demands, Trespa has applied passion and energy to delivering innovative, aesthetically pleasing and high-performance solutions for a wide range of architectural needs.

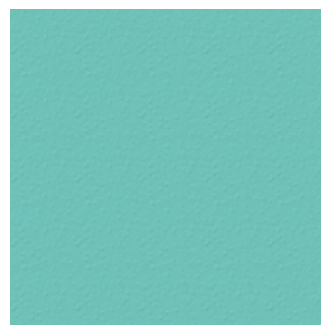
Trespa strives to set a new standard in façade solutions. Focusing on product and application development, Trespa creates exceptionally durable and attractive products. Its premier product line is Trespa Meteon,

produced with integrated decorative surfaces. As with all Trespa products, Trespa Meteon has been tested to and meets various codes and regulations for safety, quality and environmental standards.

## **A tradition of quality and service**

Trespa International believes that success depends on quality, whether in manufacturing processes, high-performance product development or customer applications. The company has a global sales organisation complemented by a network of local agents and distributors, bringing Trespa closer to the commercial perspective of its end users in regional building markets.

Every façade project is different, but the fundamental values Trespa holds remain the same: to listen to our customers, to care for our environment and people, and to set a new standard in architectural façade solutions.





## DISCLAIMER

### General

These terms apply to the use of this document and such use automatically means that the other party agrees to these terms. The information provided by Trespa International B.V. ("Trespa") in this document is solely indicative. Trespa is unable to warrant the accuracy and completeness of this information. Trespa may change the information included in this document at any time and without further notice. Trespa's customers and third parties must ascertain that they have the most recent document (for the most recent version, please consult: [www.trespa.com](http://www.trespa.com)). No rights can be derived from the information provided; the use of the information is at the other party's risk and responsibility.

Trespa does not warrant that the information in this document is suitable for the purpose for which it is consulted by the other party. This document does not contain any design, structural calculation, estimate or other warranty or representation that customers and third parties may rely on. This document does not guarantee any properties of Trespa products. Colours used in Trespa's communications (including but not limited to printed matter) and in samples of Trespa's products may differ from the colours of the Trespa products to be supplied. Samples are not intended for use in product tests

and are not representative of characteristics of the Trespa products. Trespa's products and samples are produced within the specified colour tolerances and the colours (of production batches) may differ, even if the same colour is used. The viewing angle also influences the colour perception. Metallic panels feature a surface whose colour appears to change based on the direction from which it is viewed. The specified colour stability and colour specifications relate only to the decorative surface of the Trespa products, not to the core material and samples of the Trespa products. Trespa products are delivered ex-works with straight, sawn sides.

Customers and third parties must have a professional adviser inform them about (the suitability of) the Trespa products for all desired applications and about applicable laws and regulations. Trespa does not warrant the above.

The most recent version of the current delivery programme and the Material Properties Datasheet can be found at [www.trespa.info](http://www.trespa.info). Only the information in the most recent and valid Material Properties Datasheet should be used to select and provide advice regarding Trespa products. Trespa reserves the right to change (the specifications for) its products without prior notice.

### Liability

Trespa is not liable (neither contractual nor non-contractual) for any damage arising from or related to the use of this document, except if and to the extent that such damage is the result of wilful misconduct or gross negligence on the part of Trespa and/or its management. The limitation of liability applies to all parties affiliated with Trespa, including but not limited to its officers, directors, employees, affiliated enterprises, suppliers, distributors, agents, and representatives.

### General conditions

All oral and written statements, offers, quotations, sales, supplies, deliveries and/or agreements and all related activities of Trespa are governed by the Trespa General Terms and Conditions of Sale (*Algemene verkoopvoorwaarden Trespa International B.V.*) filed with the Chamber of Commerce and Industry for Noord- en Midden-Limburg in Venlo (NL) on 11 April 2007 under number 24270677, which can be found on and downloaded from the Trespa website, [www.trespa.com](http://www.trespa.com). All oral and written statements, offers, quotations, sales, supplies, deliveries and/or agreements and all related work of Trespa North America, Ltd. are governed by the Trespa General Terms and Conditions of Sale, which can be found on and downloaded from the

Trespa North America Ltd. website, [www.trespa.com/na](http://www.trespa.com/na). A copy of these general conditions of sale will be provided free of charge on request.

All general terms and conditions other than the conditions mentioned above are dismissed and do not apply, regardless of whether such terms and conditions are referred to on requests for offers, offer confirmations, stationery and/or other documents of the other party, even if Trespa does not expressly object to such terms and conditions.

### Intellectual property

All intellectual property rights and other rights regarding the content of this document (including logos, text and photographs) are owned by Trespa and/or its licensors. Any use of the content of this document, including distribution, reproduction, disclosure, storage in an automated data file or the dispatch of such a file without Trespa's prior written consent is explicitly prohibited. ® Trespa, Meteoron, Athlon, TopLab, TopLab<sup>PLUS</sup>, TopLab<sup>ECCO-FIBRE</sup>, Virtuon, Volkern, Trespa Essentials and Mystic Metallics are registered trademarks of Trespa.

### Questions

Should you have any questions or comments, please do not hesitate to contact Trespa.

[www.trespa.com](http://www.trespa.com)

## CONTACT US

**Trespa International B.V.**  
P.O. Box 110, 6000 AC Weert  
Wetering 20, 6002 SM Weert  
The Netherlands  
[www.trespa.com](http://www.trespa.com)

**Customer Service Desk  
EMEA Export**  
Tel.: +31 (0) 495 458 359 / 573  
Fax: +31 (0) 495 458 383  
[infoexport@trespa.com](mailto:infoexport@trespa.com)

**Trespa UK Ltd.**  
Grosvenor House  
Hollinswood Road  
Central Park, Telford  
Shropshire, TF2 9TW  
United Kingdom  
Tel.: +44 (0) 1952 290707  
Fax: +44 (0) 1952 290101  
[info@trespa.co.uk](mailto:info@trespa.co.uk)

**Trespa North America Ltd.**  
12267 Crosthwaite Circle  
Poway, CA 92064  
United States of America  
Tel.: 1-800-487-3772  
Fax: 1-858-679-9568  
[info.northamerica@trespa.com](mailto:info.northamerica@trespa.com)

**Trespa China Co. Ltd.**  
Room 2604-05, HuaiHai Plaza  
No. 1045 HuaiHai Road (central)  
ShangHai 200031  
P.R. China  
Tel.: +86 (0) 21 6288 1299  
Fax: +86 (0) 21 6288 1296  
[infochina@trespa.com](mailto:infochina@trespa.com)

**Customer Service Desk  
Asia/Pacific**  
Tel.: +86 (0) 21 5465 8388  
Fax: +86 (0) 21 5465 6989  
[infoapac@trespa.com](mailto:infoapac@trespa.com)

**Trespa Singapore Pte Ltd.**  
3 Raffles Place  
#07-01 Bharat Building  
Singapore 048617  
Tel.: +65 6329 9783  
Fax: +65 6329 9699  
[infoapac@trespa.com](mailto:infoapac@trespa.com)

## VISIT US

**Trespa Design Centre  
New York**  
62 Greene Street (Ground Floor)  
New York, NY 10012  
United States of America  
Tel.: 1-212-334-6888  
Fax.: 1-866-298-3499  
[info.ny@trespa.com](mailto:info.ny@trespa.com)  
[www.trespa-ny.com](http://www.trespa-ny.com)

**Trespa Design Centre  
Barcelona**  
Calle Ribera 5,  
08003 Barcelona  
Spain  
[info.barcelona@trespa.com](mailto:info.barcelona@trespa.com)



William Kife Architects,  
United States of America

Projects on cover:  
Arch. Vista Pte Ltd, Singapore  
Arch. zpd+a, United States  
of America  
Arch. Chapman Taylor, Spain  
Arch. Kwan Henmi Architecture,  
United States of America

Your Trespa representative :

code U2451 version 3.1  
date 04-2011 copies 10.000  
TOM-code 410887 / U9520

Please visit [www.trespa.com](http://www.trespa.com)  
for the most up to date version  
of this document.



